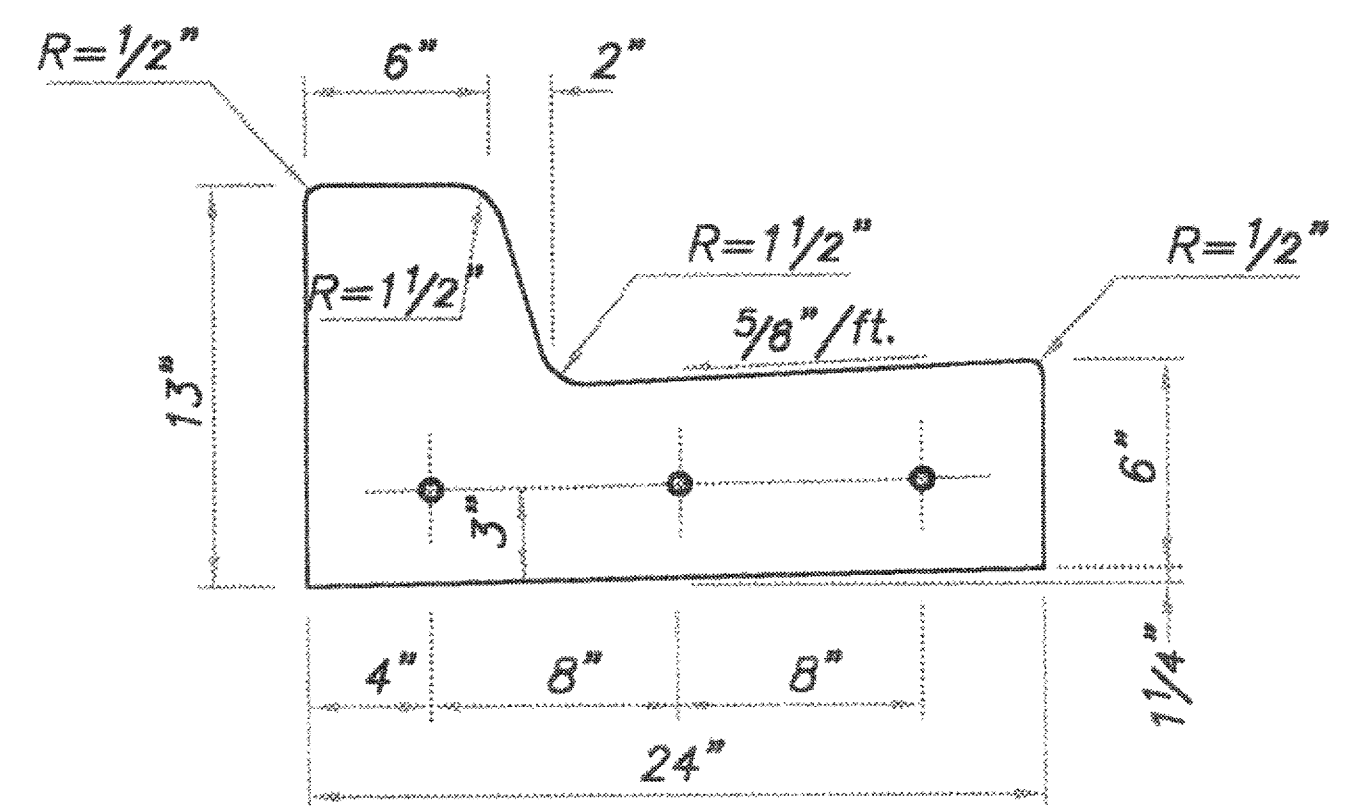
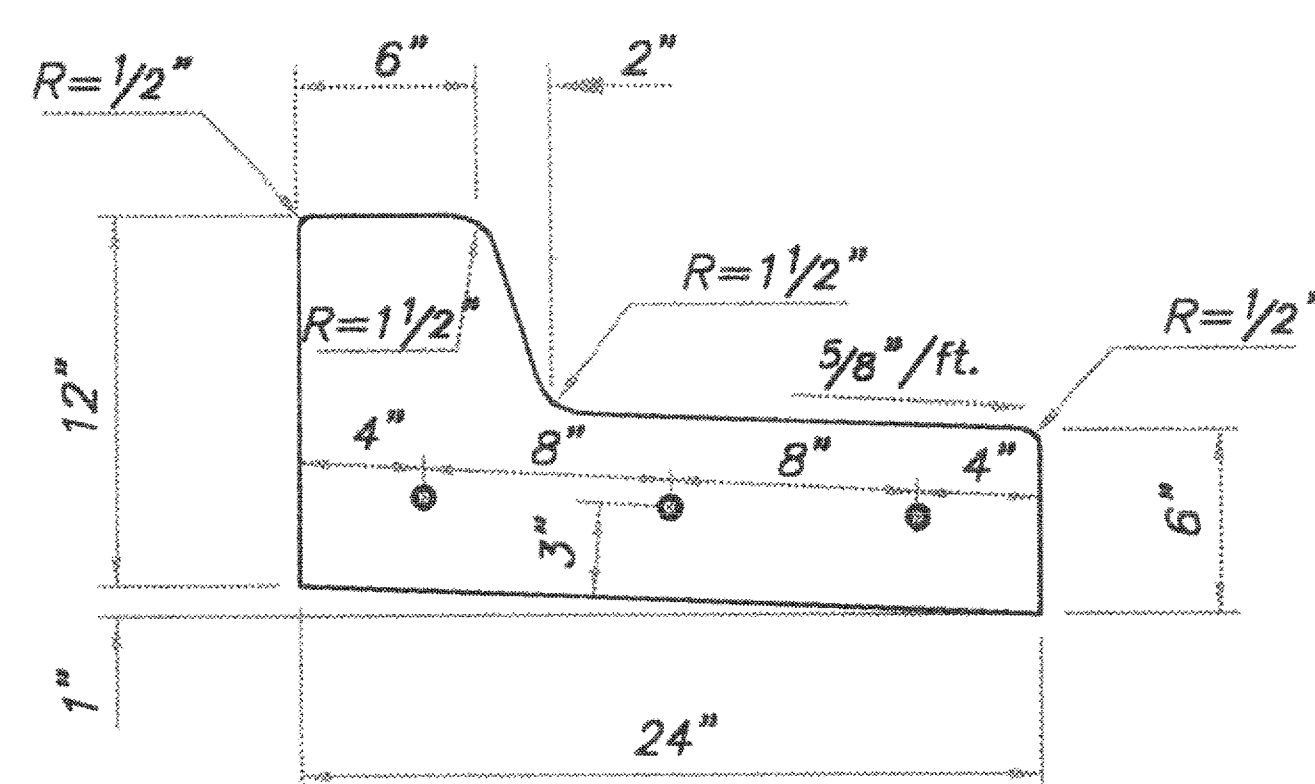


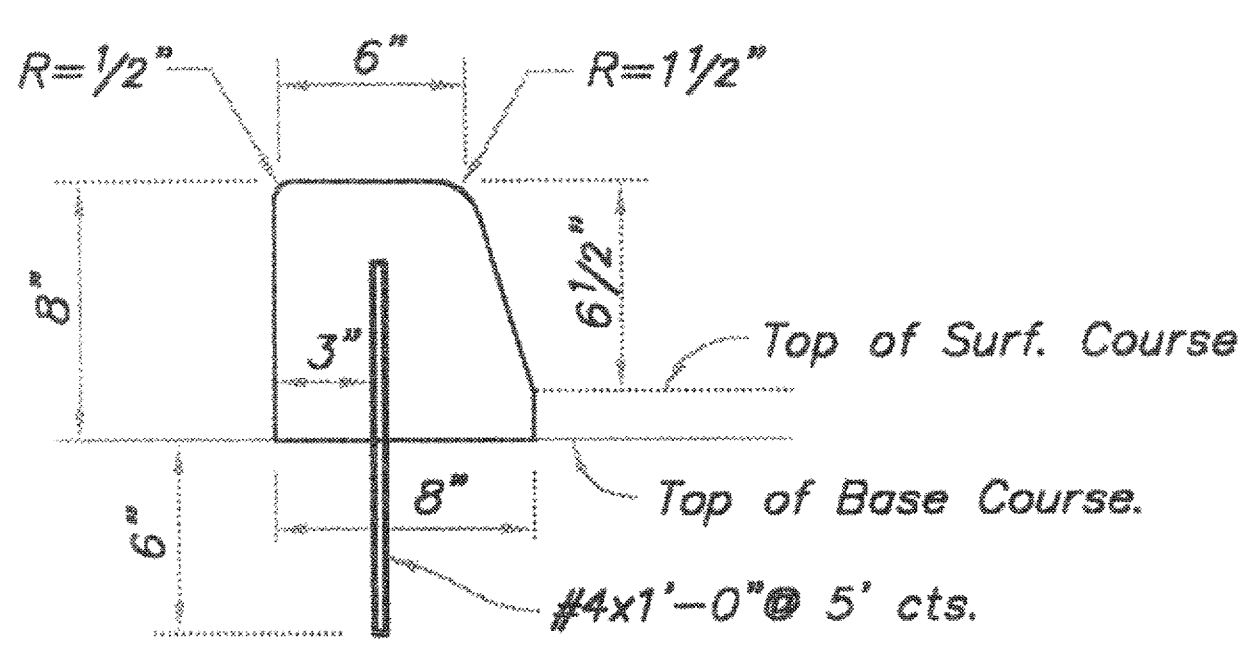
STRAIGHT CURB
(TYPE C-1)



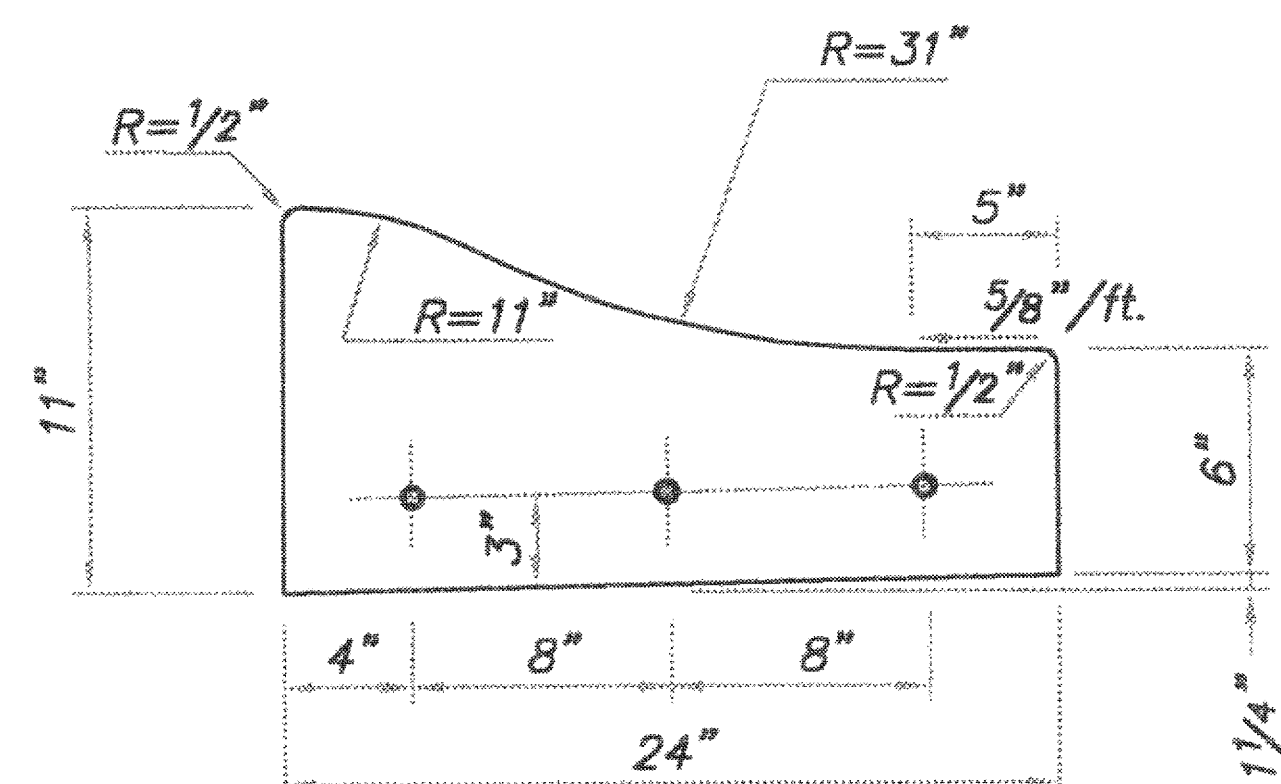
STRAIGHT BACK CURB & GUTTER
(TYPE CG-1)



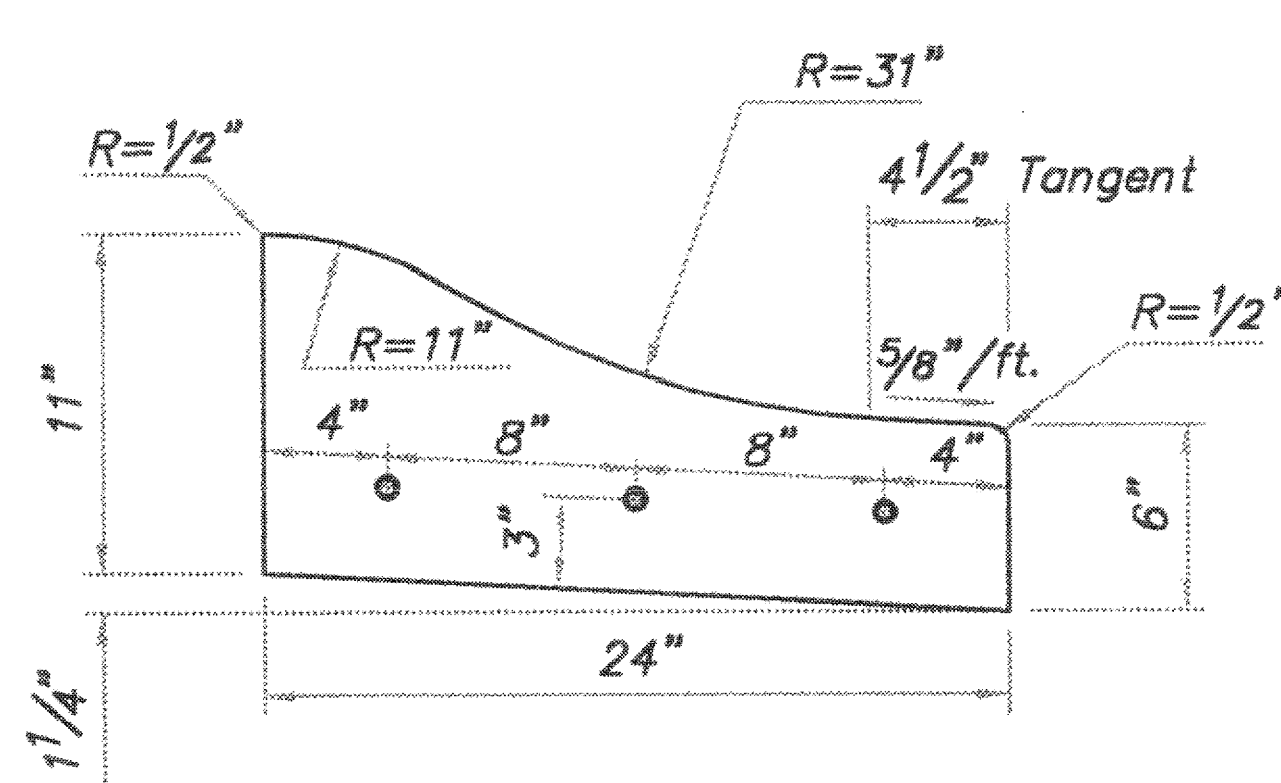
STRAIGHT BACK DRY CURB & GUTTER
(TYPE CG-1 DRY)



DOWELLED CURB
(TYPE DC)



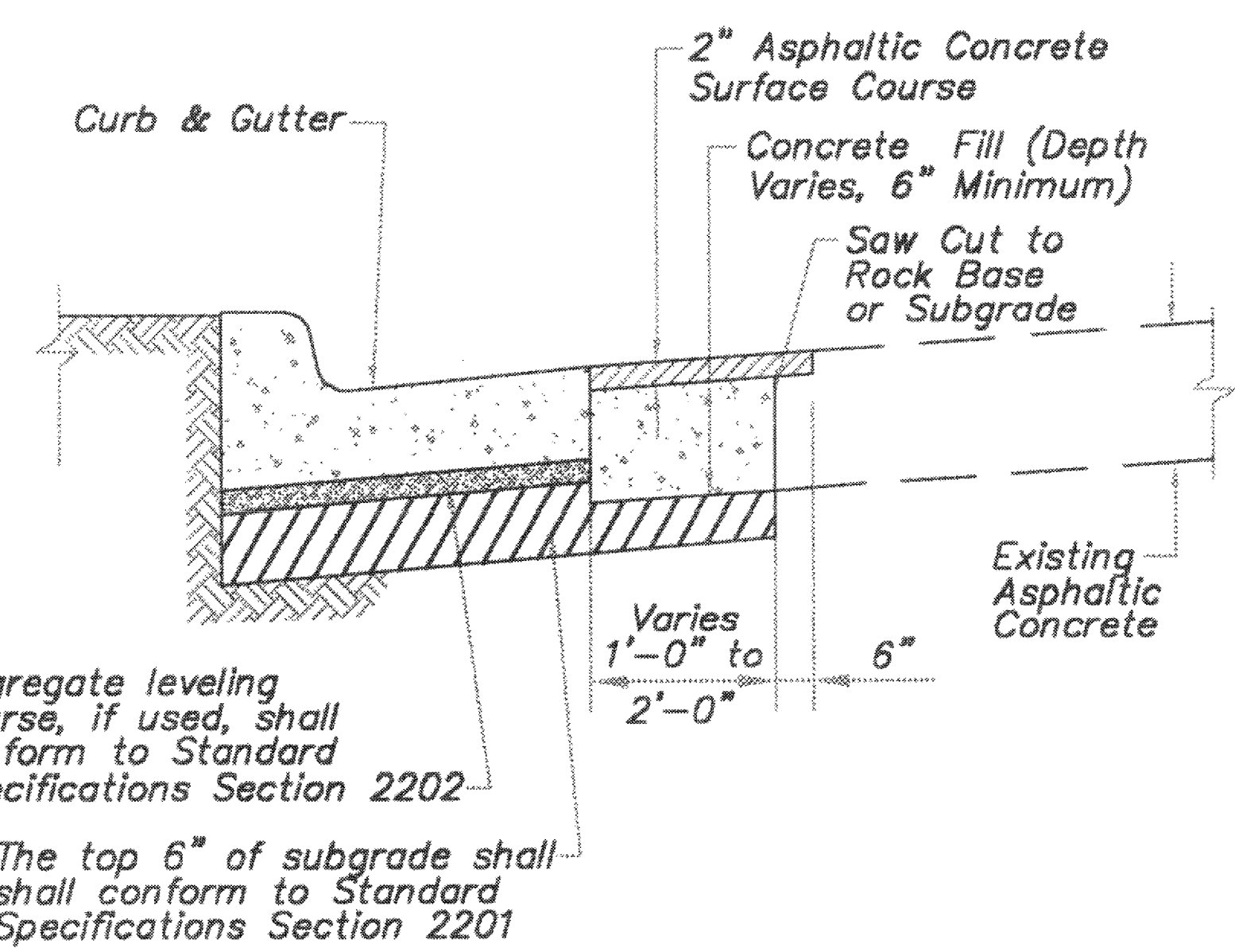
ROLL BACK CURB & GUTTER
(TYPE CG-2)



ROLL BACK DRY CURB & GUTTER
(TYPE CG-2 DRY)



GENERAL NOTES:

1. 3/4" Isolation Joints with 5/8" dia. x 2' smooth dowels shall be placed at radius points and at 150' intervals. These dowel bars shall be greased and wrapped on one end with expansion tubes.
2. 1" deep Contraction Joints shall be installed at approximately 10' intervals. These joints shall pass across the entire curb section.
3. Fix dowel bars with bar supports.
4. Depth of curb shall be a minimum of 8" through the handicap access ramp.
5. Concrete shall conform to Standard Specifications Section 2208.2.B.
6. Asphaltic concrete surface course shall conform to Standard Specifications Section 2205.2.



CURB REPLACEMENT DETAIL

AMERICAN PUBLIC WORKS ASSOCIATION	
APWA	KANSAS CITY METROPOLITAN CHAPTER
CURB DETAILS	STANDARD DRAWING NUMBER C - 1 ADOPTED: MAY 23, 2001

SHEET NO.	DRAWING TITLE: STANDARD DETAILS	BRAND REVIEW 04/12/2018	PREPARED FOR: © 2013 McDonald's USA, LLC  McDonald's USA, LLC	PREPARED BY:  PHELPS ENGINEERING, INC. 1270 N. Winchester Olathe, Kansas 66061 (913) 393-1155 Fax: (913) 393-1166 www.phelpseengineering.com	REV	DATE	BY
					2	07/09/18	PER CITY COMMENTS
					1	06/20/18	PER CITY COMMENTS
							DESCRIPTION