

DOWEL SLEEVE (CLOSED END) TO FIT DOWEL AND BE SECURED

DOWEL DIAMETER = $\frac{7}{8}$ (IN)

18" LONG SMOOTH DOWEL • 18" O.C.

VERTICAL SAW-CUT $\frac{3}{16}$ " MIN.

POURED JOINT SEALING COMPOUND

(FIRST POUR)

$\frac{1}{3}$ " (SECOND POUR)

T = PAVEMENT THICKNESS

$\frac{1}{2}$

TOP $\frac{1}{8}$ " NO SEALING COMPOUND

DOWEL TO BE LUBRICATED

4" CONC. SLAB. SEE CIVIL DWGS.

1 1/2" O.D. DIA. (MAX.)
A53 GRADE B STEEL
PIPE

4" O.C.

4"

SET HANDRAILS INTO
A CONC. PIER & GROUT

6" OR VARIES W/ CURB RAMP

A.C. PAVING OR CONC.
PAVING SEE CIVIL DWGS.

3"x12" SLEEVE FILL AROUND
TUBE W/ POUR STONE
NON-SHRINK GROUT

4" MAX. SEE SITE PLAN

EXTERIOR FACE OF BUILDING

3'-6" MIN.

2'-4" O.C.

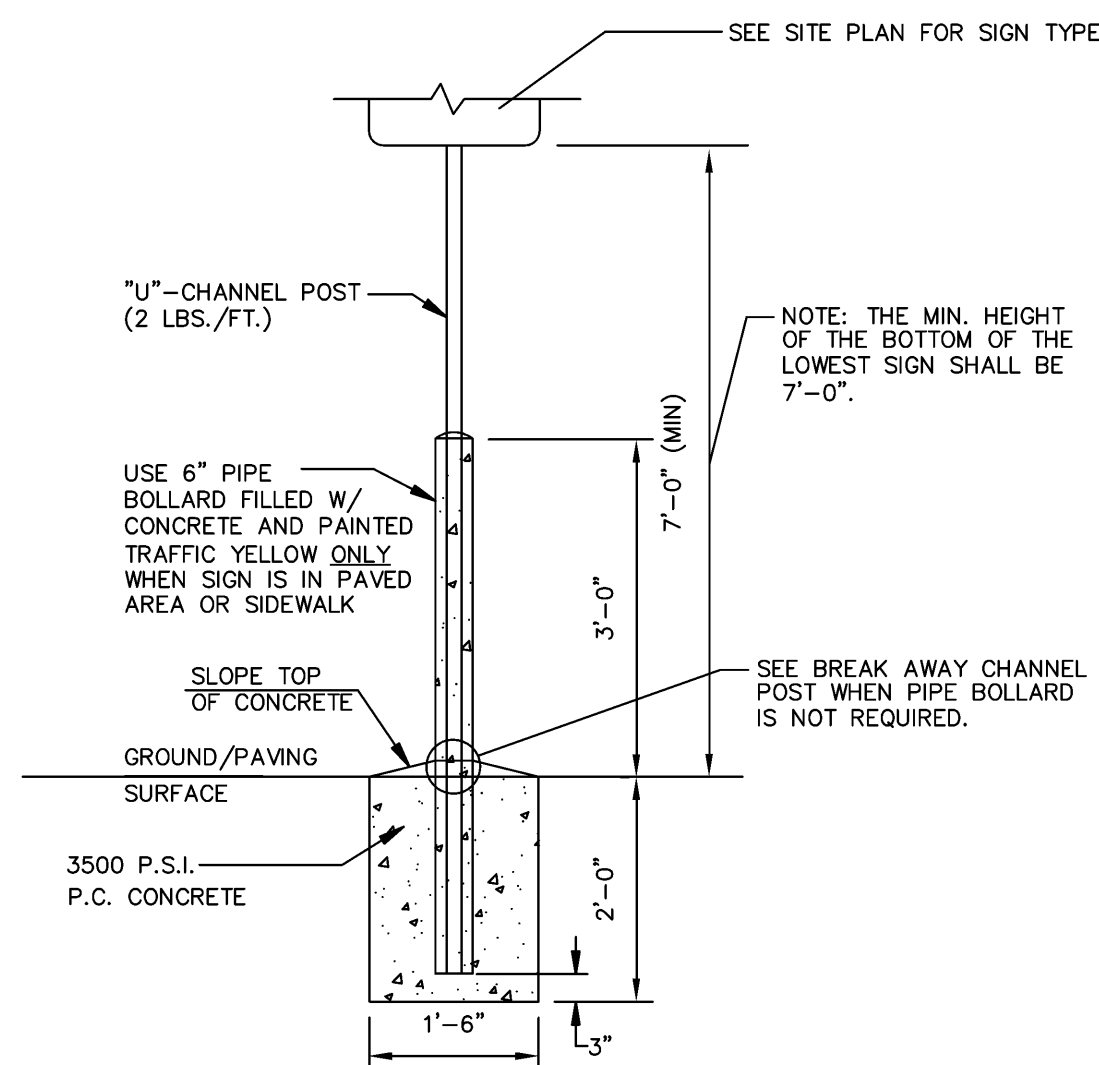
1 1/2" DIA. A53 GRADE B STEEL PIPE HANDRAIL SET INTO CONC. PIER - VERTICAL SPACED AT 6'-0" O.C. MAX. - SEE SITE PLAN FOR GUARD RAIL LENGTH

INTERMEDIATE RAILS - 1/2" Ø STL. BARS @ 4" O.C. MAX.

8" DIA. X 18" DEEP CONC. PIER

NOTE: PREPARE & PAINT METAL RAIL PER SPECIFICATIONS- COLOR: BENJAMIN MOORE "SHADOW GRAY 2125-40" OR EQUAL

The diagram illustrates a cross-section of a concrete curb and pavement. A vertical curb is on the left, with a sloped pavement surface extending to the right. A horizontal line represents the pavement surface. A vertical line indicates the curb's edge. A horizontal line with a small circle at its end points to the curb, labeled "Contractor's option to thicken curb." A horizontal line with a small circle at its end points to the pavement surface, labeled "P.C. Concrete Paving. See Paving Details for paving sections, subbase, subgrade, and compaction requirements." A horizontal line with a small circle at its end points to the joint between the curb and the pavement, labeled "Tied Key Joint (if curb is poured separately from pavement). See const. joint detail this sheet." A horizontal line with a small circle at its end points to the pavement surface, labeled "Concrete per pavement section (varies)."



ACCESSIBLE SIGN

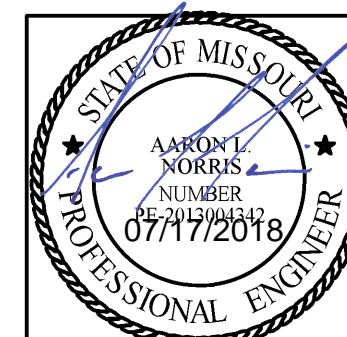
- MUTCD-R9-6B (12"x18") BLUE SIGN WITH WHITE COPY, QTY. 8 (RE: SITE PLAN FOR LOCATIONS)
- 2-1/2" LETTERS
- 1" RADIUS
- \$50-\$300 FINE
- MUTCD-R9-016 1 LETTERS
- VAN ACCESSIBLE
- MUTCD-R9-013 VAN ACCESSIBLE SIGN 1 LETTERS
- 2 X 2 INCH SQUARE STEEL POST (GALV.) INSTALL PER MANUFACTURER'S INSTRUCTIONS
- GRADE
- CONCRETE FOOTING
- LOCATE SIGN AT HEAD OF EACH HANDICAP STALL PER CODE; EQUALLY SPACE POST BETWEEN STRIPING. PLACE POST FLUSH W/ EDGE OF SIDEWALK DO NOT MOUNT SIGN ON BUILDING.
- SUBGRADE
- 8" (min)
- 3'-0"
- 5'-0" MIN.
- 12"
- 18"
- PARKING
- ! (Warning symbol)


Diagram illustrating the layout and dimensions for a van accessible parking space:

- Overall Width:** 27'9"
- Handicap Sign:** Located on the back of the curb.
- Back of Curb:** The boundary line for the parking space.
- Van Accessible Space:** The primary parking area, marked with a wheelchair symbol and the text "VAN ACCESSIBLE".
- 4" Blue Stripe (Typ.):** The boundary line separating the van accessible space from the standard parking space.
- 4" Blue Diagonal 2" O.C. (Typ.):** The diagonal lines within the van accessible space.
- 45°:** The angle of the diagonal lines.
- 96" (MIN.):** The minimum width of the van accessible space.
- 96" (MIN.):** The minimum width of the van access aisle.
- 96" (MIN.):** The minimum width of the standard parking space.
- Standard WC Parking Space:** The adjacent parking space.
- 4" Blue Stripe:** The boundary line separating the standard parking space from the van accessible space.
- 15':** The height of the curb.
- Painted Lettering Required at Van Accessible Spaces:** A note indicating that the text "VAN ACCESSIBLE" must be painted on the ground.

PAVEMENT MARKING NOTES:

1. ALL PAVEMENT MARKINGS SHALL BE APPLIED BY A QUALIFIED CONTRACTOR HAVING A MINIMUM 3 YEARS EXPERIENCE IN TRAFFIC GRADE PAVEMENT MARKING APPLICATIONS.
2. PAINT SHALL BE A NON-BLEEDING, QUICK-DRYING, ALKYD PETROLEUM BASE PAINT SUITABLE FOR A TRAFFIC-BEARING SURFACE AND SHALL MEET FS TPD-85E AND MIXED IN ACCORDANCE WITH THE MANUFACTURER'S INSTRUCTIONS BEFORE APPLICATION.
3. SWEEP AND CLEAN SURFACE TO ELIMINATE LOOSE MATERIAL AND DUST. APPLY TWO (2) COATS OF PAINT AT MANUFACTURER RECOMMENDED RATE
4. WITHOUT THE ADDITION OF THINNER, WITH A MAXIMUM OF 100 SQUARE FEET PER GALLON. APPLY WITH MECHANICAL EQUIPMENT TO PRODUCE UNIFORM STRAIGHT EDGED SIDELINE CURBS, AND SIDEWALKS USE A STRAIGHTEDGE TO ENSURE A UNIFORM, CLEAN, AND STRAIGHT STRIPE. THE FOLLOWING ITEMS SHALL BE PAINTED WITH THE COLORS NOTED BELOW:
5. A. HANDICAP SYMBOLS: SEE DETAIL THIS SHEET.
B. PARKING STALL STRIPING: WHITE.



SHEET NO.	DRAWING TITLE	BRAND REVIEW		PREPARED FOR	DATE	BY
		04/12/2018	PLANNING			
STANDARD DETAILS	PROJECT ADDRESS:	PERMIT		© 2013 McDonald's USA, LLC	PREPARED BY:	
		—				
3921 BOLGER INDEPENDENCE, MO 64055	PROJECT CAD FILE:	BID		 McDonald's USA, LLC These drawings and all specifications are the confidential and proprietary property of McDonald's USA, LLC. The contract documents were prepared for use on this specific project and are not to be used for any other project without the express written authorization of McDonald's USA, LLC. The contract documents are the property of McDonald's USA, LLC and shall remain the property of McDonald's USA, LLC. Use of these drawings for reference or example on another project requires the services of property licensed architects and engineers. McDonald's USA, LLC is not responsible for the use of these drawings on any project if the contract documents for reuse on another project is not authorized.	PHELPS ENGINEERING, INC. 3270 N. Winchester Olathe, Kansas 66061 (913) 293-1195 Fax (913) 293-1166 www.phelpsengineering.com	
		CONSTRUCTION				
—	STATE SITE CODE:	DRAWN BY:		MISSOURI ENGINEERING CERTIFICATE OF AUTHORIZATION: 2007005058	REV	
	024-0503	MRR				
					DATE	
					PER CITY COMMENTS	
					PER CITY COMMENTS	
					DESCRIPTION	