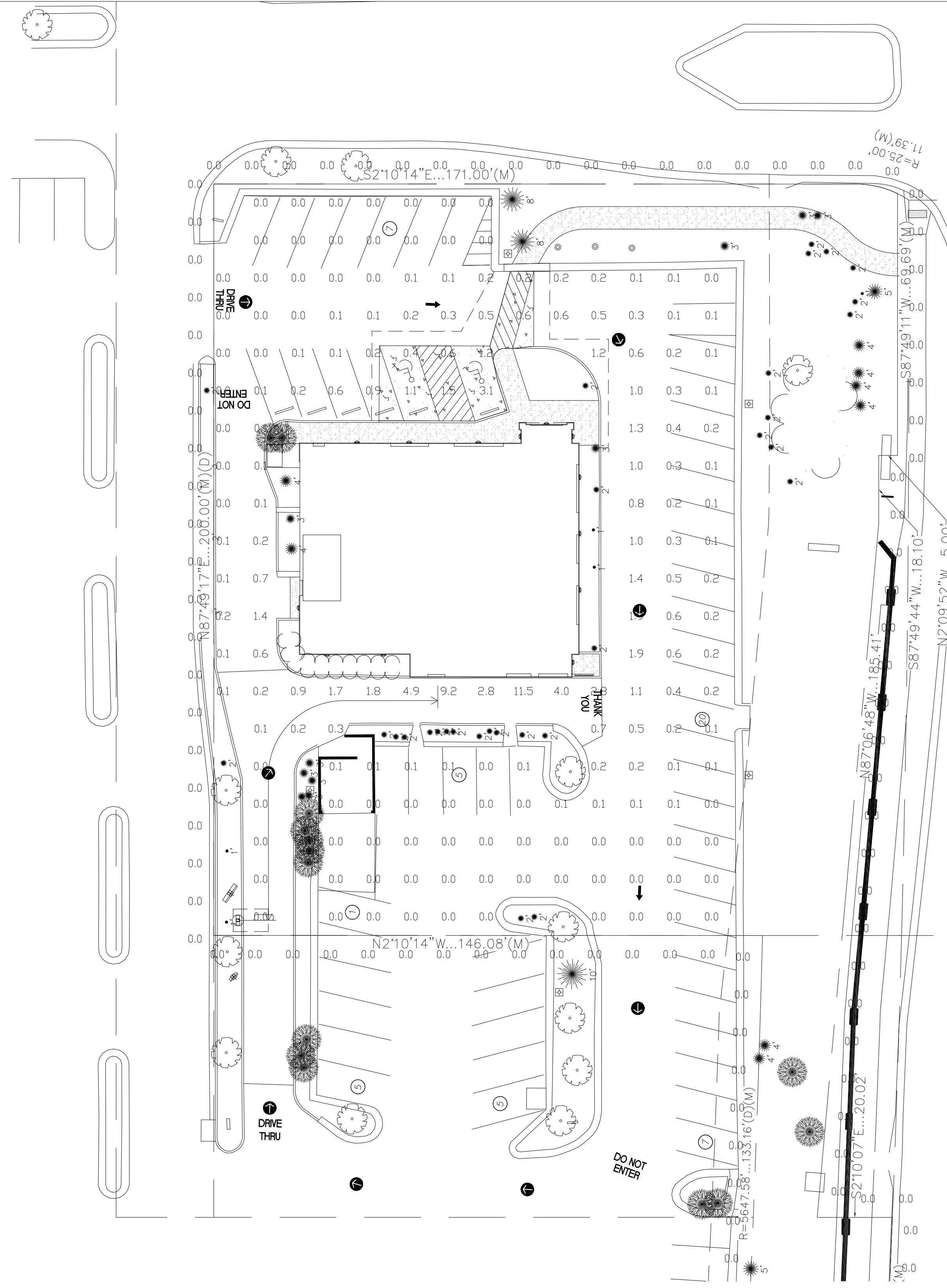


- NOTES:
1. THE FOOTCANDLE LEVELS AS SHOWN ARE BASED ON THE FOLLOWING CRITERIA. ANY SUBSTITUTIONS IN SPECIFIED FIXTURES OR CHANGES TO LAYOUT WILL AFFECT LIGHTING LEVELS SHOWN AND WILL NOT BE THE RESPONSIBILITY OF SECURITY LIGHTING.
 2. THE CONTRIBUTION OF THE SOFFIT / BUILDING LIGHTING IS NOT REFLECTED ON THE DRAWING UNLESS SOFFIT / BUILDING LIGHTING IS SPECIFIED IN THE FIXTURE SCHEDULE BELOW.
 3. DISTANCE BETWEEN READINGS 5'
 4. FINAL ADJUSTMENTS TO AIMING ANGLE/DIRECTION OF FIXTURES MAY BE REQUIRED TO ELIMINATE LIGHT TRESPASS OR GLARE ONTO ADJOINING PROPERTIES OR ROADWAYS.



PAVED SURFACE READINGS

Average	0.5
Maximum	11.5
Minimum	0.0
Avg/Min	N/A
Max/Min	N/A

PROPERTY LINE READINGS

Average	0.0
Maximum	0.0
Minimum	0.0
Avg/Min	N/A
Max/Min	N/A

FIXTURE TYPE:	SYMBOL	FIXTURE QUANTITY	CONFIG	QUANTITY	EPA	MOUNTING HEIGHT	LLF	POLE TYPE:	QUANTITY	WIND LOAD	ALLOWED EPA
LB6LED10L50K WH / IBXSQL	○	4				9'	0.87				
RWSC-36L-5K-DD-U-PS	□	13				9'	0.87				
HIRAF-HE-LED-36-DD-U-PS	—	3				19.333'	0.87				
HIRAF-HE-LED-48-DD-U-PS	—	3				19.333'	0.87				

THIS DRAWING MEETS OR EXCEEDS MCDONALD'S CURRENT ILLUMINATION SPECIFICATIONS OF A 3-4 FOOTCANDLE AVERAGE, UNLESS SUPERSEDED BY OTHER REQUIREMENTS.

THIS LAYOUT MAY NOT MEET TITLE 24 OR LOCAL ENERGY REQUIREMENTS. IF THIS LAYOUT NEEDS TO BE TITLE 24 COMPLIANT OR MEET OTHER ENERGY REQUIREMENTS, PLEASE CONSULT FACTORY WITH SPECIFIC DETAILS REGARDING PROJECT REQUIREMENTS SO THAT REVISIONS MAY BE MADE TO THE DRAWING.

THIS LIGHTING PATTERN REPRESENTS ILLUMINATION LEVELS CALCULATED FROM LABORATORY DATA TAKEN UNDER CONTROLLED CONDITIONS IN ACCORDANCE WITH ILLUMINATING ENGINEERING SOCIETY APPROVED METHODS. ACTUAL PERFORMANCE OF ANY MANUFACTURER'S LUMINAIRES MAY VARY DUE TO VARIATION IN ELECTRICAL VOLTAGE, TOLERANCE IN LAMPS, AND OTHER VARIABLE FIELD CONDITIONS.

UNLESS OTHERWISE SPECIFIED, ALL DIMENSIONS ARE IN INCHES

NOTES:

SCALE	1" = 20' 0"	DATE	NEXT ASSEMBLY	REF. DRG'S.
DRAWN BY	MJ	1/3/18		
CHECKED BY				
APPROVED BY				
APPROVED BY			FINISH	
APPROVED BY				
SHOP ORDER			MATERIAL	
PROJECT NO.				

SECURITY LIGHTING™

2100 South Blvd. Suite 400, Billings, Montana, 16, 60008
1-800-544-6888

POINT-BY-POINT FOOTCANDLE PLOT FOR

- MCDONALD'S -
13330 W 87TH PKWY
LENEXA, KS

DRAWING NUMBER
1PCP38016